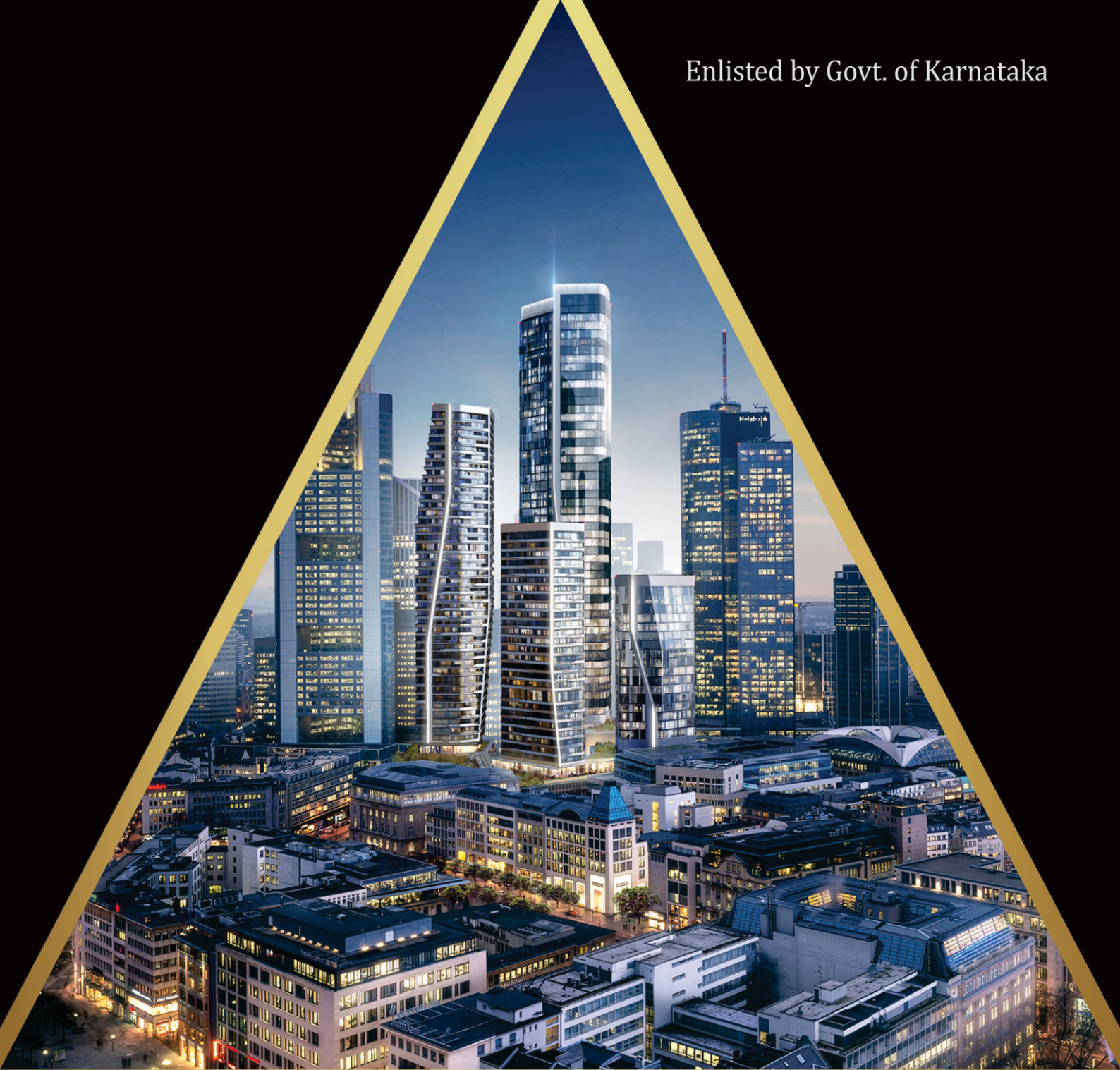


Enlisted by Govt. of Karnataka



DIGITECH ELEVATORS PVT. LTD.

AN ISO 9001:2015 CERTIFIED COMPANY

SAFE SECURE | PREMIUM | QUALITY

www.digitechelevators.com



OUR PRODUCTS

Passenger Lift :

- ▲ Machine Room Less
- ▲ Machine Room Lift (Geared)
- ▲ Home Lift (Single Phase)
- ▲ Capsule Lift
- ▲ Hydraulic Lift
- ▲ High Speed Lifts

Service Lift :

- ▲ Hospital Lift (Stretcher Lift)
- ▲ Freight Lift (Goods & Passenger Lift)
- ▲ Car Lift
- ▲ Goods Lift (Traction & Hydraulic)
- ▲ Dumb Waiter
- ▲ Escalator & Moving Walks



HOME



HOTEL



HOSPITAL



APARTMENT



INDUSTRIAL



TRANSPORT



SHOPPING

PROFILE

We Digitech Elevators Pvt. Ltd. take this opportunity to introduce ourselves as one of the companies in Elevators maintenance and installation business. We Digitech Elevators Pvt. Ltd. is an ISO 9001-2015 certified company and enlisted by Government of Karnataka. As we are in the industry for more than Two Decades, we have installed many lifts successfully, and maintaining more than One Thousand Two Hundred and Fifty (1250) lifts in and around Bangalore.

Digitech Elevators Pvt Ltd is a leading vertical Tran's mobility company with major interest in Elevator Installation, Repair and Modernization of existing Lifts.

We Supply and install elevators and we design the most versatile lifts solutions, we assure the highest quality, latest technology, and most important We initiate this scope once the client request is made and of course this certainly enhances their awareness in terms of better, efficient and sustainable machines.

Further to the work description, we undertake Annual Maintenance Contract (AMC) of elevators, escalators, moving walks, etc in residential, Commercial, Industrial, Hospitals, etc with quick response and time management as our only "motto"

VISION OF SALES AND SERVICE:

The company sources only the best quality materials and machinery and we focus on "quality management" which enables us to provide quality services to our clients at competitive prices.

Digitech Elevators Pvt. Ltd. remains committed to provide the most satisfactory after sales service. The ultimate satisfaction of our valued clients endorses the company's commitment for best techniques and design backed by value based business ethics.

WHY CHOOSE DIGITECH ELEVATORS PVT. LTD. ?

The success of our organization is based on valuable and time proven satisfactory service to customers.

We meet your expectations with wide range of elevators & related solutions starting from conventional to the most innovative and complex elevators. Our proposals are customizable in every possible manner which complies customer needs.

We comply with strict technical & safety regulations as per the company policies and IS guidelines. The quality of our work is certified as per Indian standards and we confirm by the fact that 100% of our customers are satisfied with our services.

We guarantee the best value for money, prompt services, quality products & services and offer a versatile range of elevator solution to meet any kind of new installation /repair and modernization of existing lifts.



STANDARD CABINS & OPTIONS (STAINLESS STEEL)

With Our highly specialized knowledge and Vast Experience we provide our clients with most qualitative range of Stainless Steel Lift Cabins. Our proficient technicians design these cabins in custom-built size to meet the specifications and requirements of our clients in an effective manner.



DOORS DESIGN

SS Hairline / SS Mirror / SS Etched / SS Golden Mirror / Glass / M.S. Powder Coated



SS Auto Center Opening Door



SS Glass Auto Door



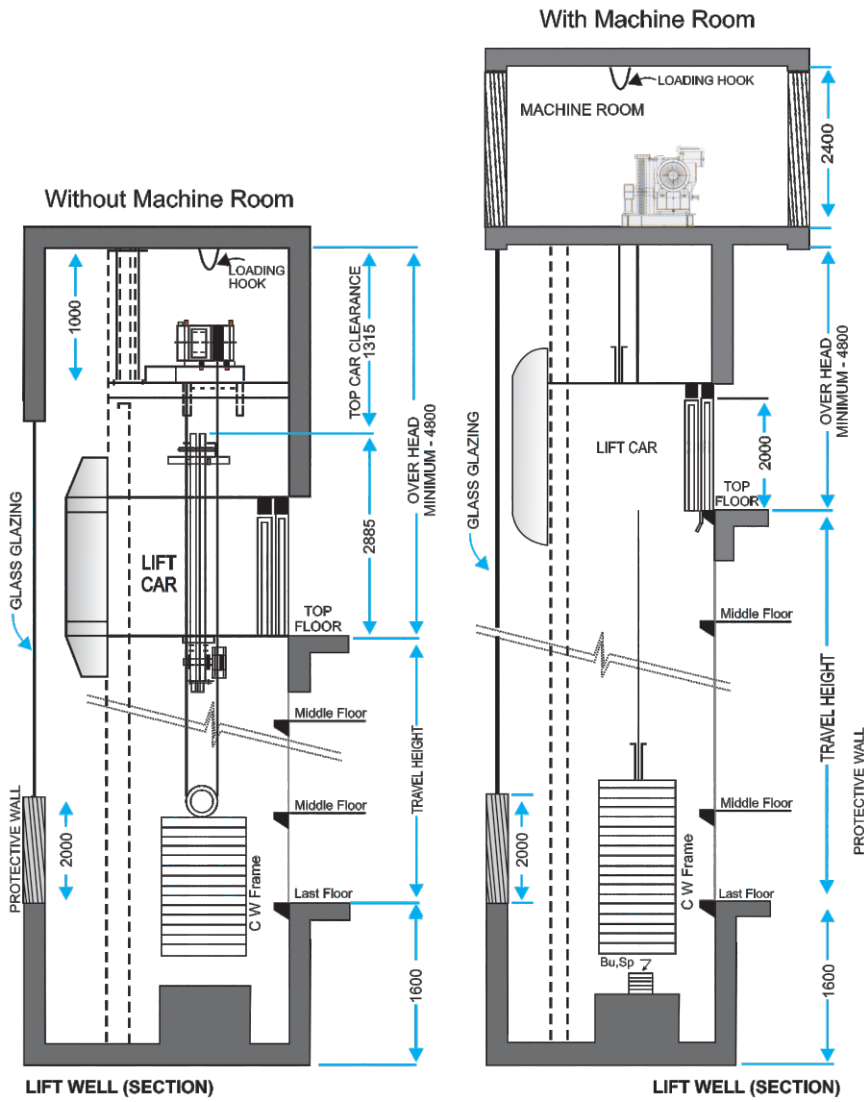
Slid Open Door



Swing Door with Partial Visibility



CAPSULE LIFT



Digitech Elevators Capsule Elevators act as Architectural highlights on prestigious buildings. They can be called the ornaments of a building as they enhance its beauty and bring life into it. Its design, features and infinite options add to its optimum travel comfort. It has aesthetically attractive interiors with large glass viewing panel. specialised knowledge and our experience over last four decades in executing such projects comes handy. Digitech Elevators capsule lifts are inspired with creative flair to suit your particular idea.



HOME LIFT

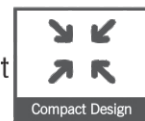


Home Lift Gearless Traction Machine

Capacity : 450kg / Speed : 0.4mps / Maximum Static Load :1300kg / Maximum Travel :12 meters with 2:1 roping

Capacity	Speed	Motor	Pole	Power Source	Current	Rated Torque	Frequency	Motor Speed	Sheave Spec (mm)			
(Kg)	(m/s)	(m/s)	20	(VAC)	(A)	(NM)	(Hz)	(RPM)	Dia	ROP#	Ø	Pitch
450	0.40	1.1	20	380	3.5	138	12.7	76	200	4	8	12
450	0.40	1.1		220	2.5	138	12.7	76	200	4	8	12

Home Lift Gearless Traction Machine
 Capacity: 450 Kg
 Speed: 0.4mps
 Maximum Static Load: 1300 kg
 Maximum Travel: 12 meters with 2:1 roping



- ▲ Travel Comfortably to every floor at a speed of 0.4 m/s.
- ▲ Give elderly and dependent people the freedom to move from floor to floor without using the stair.
- ▲ Digitech Elevators Mini is compact and facilitates elevators with a minimum of space and civil work.
- ▲ Digitech Elevators Mini operators on single-phase 230v domestic supply.
- ▲ Digitech Elevators Mini silent; it uses no oil, reduces power consumption and is also eco-friendly.
- ▲ Does not require regular machine room arrangement for installation and three phase power supply for its operation.

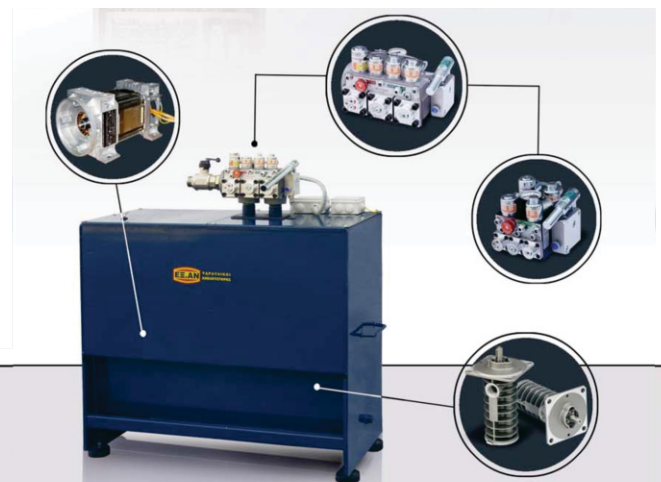
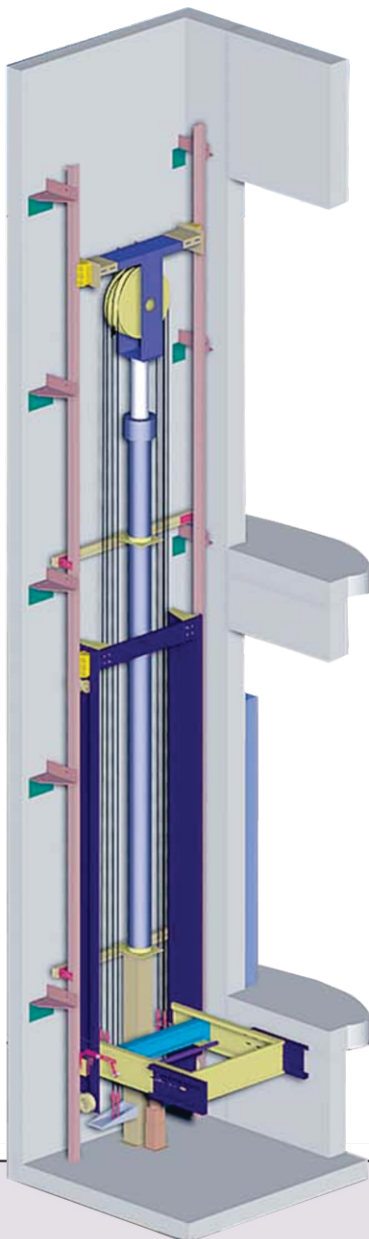


HYDRAULIC LIFT

Hydraulic passenger lift is best suitable only if there no head room or less shaft size. It does not consume power during the descent, but there is more power consumption, and sound system vibration during ascending. Digitech hydraulic lifts are completely safe, uses rope pulley and oil mechanism along with a submerged motor which makes them more speedy, consume less power and are of low maintenance.

Advantages :

- High quality materials
- Smooth travel without any vibrations
- Emergency power operation
- Easy and quick installation
- Full serial pre-wired electrical installation
- Various choices of cabins and operation panels
- Competitive prices
- Complete installation manuals
- Travel up to 24m



MRL LIFT

We are known for our effective variety of MRL Elevators, which do not required any space to save and machine room. These products are manufactured under the guidance of our quality experts and have various qualities like high performance, light weighted, efficient, reduced motor size, tensile strength and long life. We offer these products with high rates of travel speed



VERTICAL DIMENSION

Speed (m/sec)	1.0	1.5	1.75
Standard Car Inside Height (CH) mm	2200	2300	2300
Standard Door Height (HH) mm	2000	2100	2100
Maximum Travel (TR) in m	60	80	80
Standard Pit Depth (PD)	1650	1800	2000
Standard Over Head Height (OH)	4650	4850	5000
Minimum Floor to Floor Height in mm	2600	2600	2600

Note:

1. The dimensions in the table are applied to standard specifications only.
2. Rated capacity is calculated as 68kg per person.
3. Minimum hoistway dimensions shown in the table are after waterproofing of the pit and do not include plumb tolerance.
4. Lifting hook in headroom required. All walls minimum 150RCC or 230 Brick. (Hoistway front wall 230 mm Brick preferred).
5. RCC headroom structural slab minimum thickness 150mm.
6. For special requirements our sales person will be happy to work with you in preparation of the drawings.

HOSPITAL STRETCHER LIFT

Digitech Hospital / Bed Lift are primarily for moving stretchers with patients up and down in a hospital. This range come with economic design and appropriate dimension to accommodate patient's stretcher or wheelchair. They are designed in such a manner that patients will have smooth, jerk-less and safest travel. The capacity of hospital lift ranges from 10 passengers to 26 passengers.



FIXTURES AND TOUCH PANNELS

Elegant & reliable micro push button with stainless steel faceplate and optional selection for full length and handicapped application.



ESCALATOR

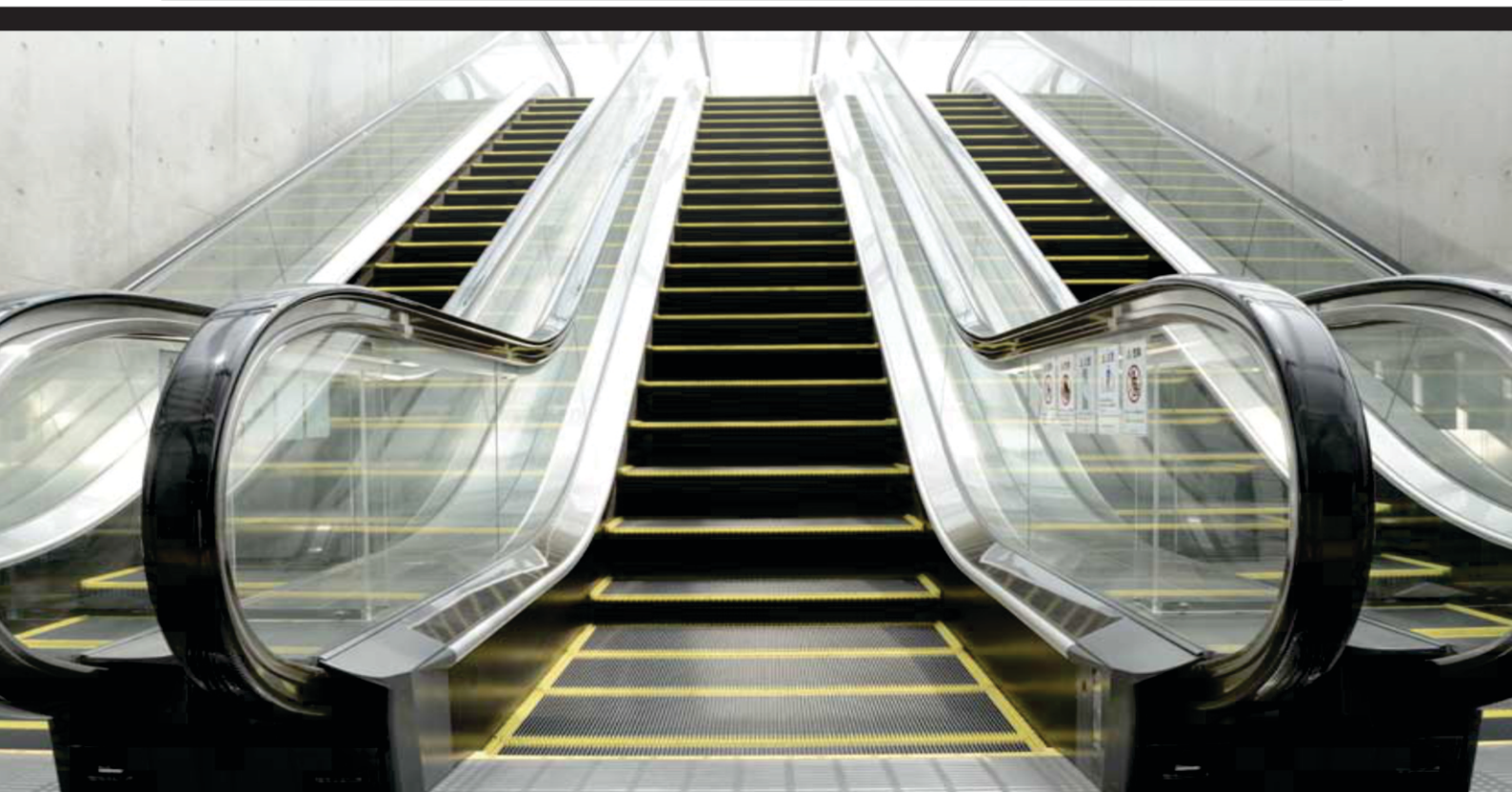
Technical Specifications

Normal Width (mm)	800	1000	1200
Actual Step Width (mm)	600	800	1000
Capacity (Persons/hr)	4500	6700	9000
No. of Flat Steps	Standard 2, optional 3*	Standard 2, optional 3*	Standard 2, optional 3*
Angle of Inclination (Deg.)	30 or 35	30 or 35	30 or 35
Speed (M/s)	0.5	0.5	0.5

*For rise above 6M, 3 flat steps will be standard

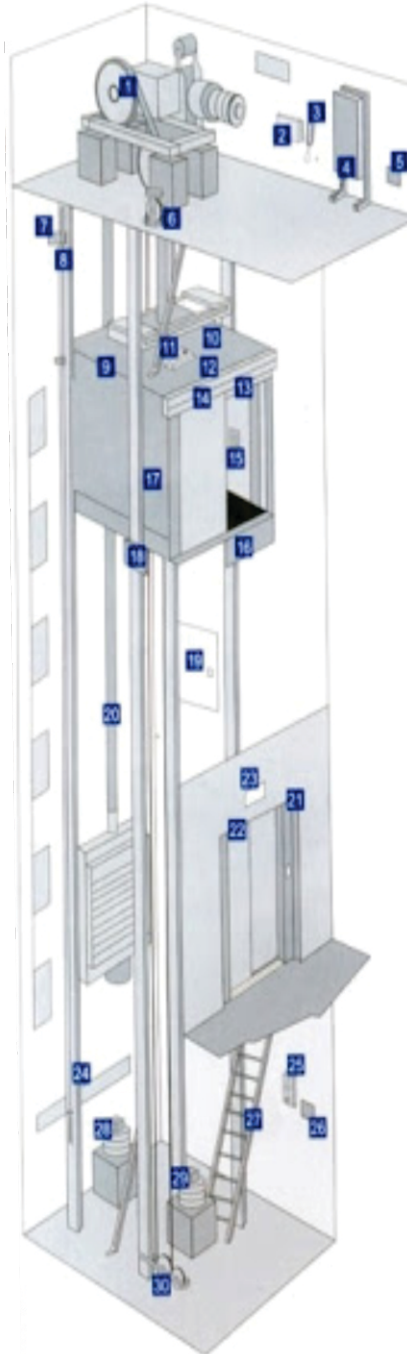
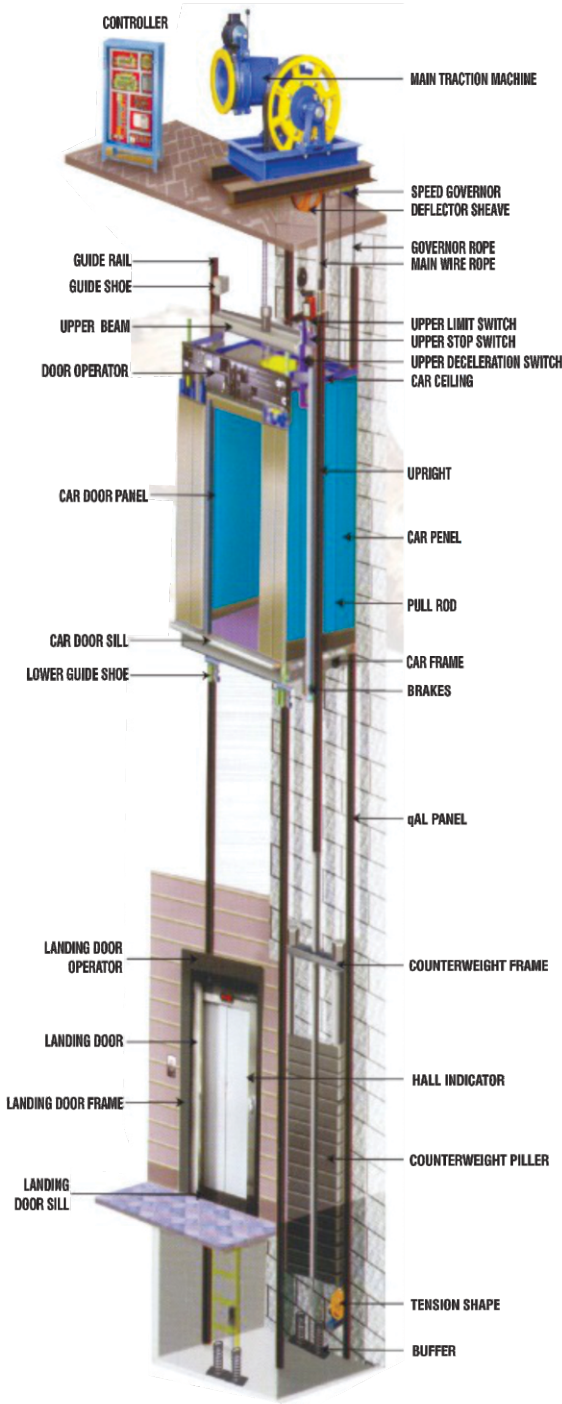
Exterior Specifications

	Description	Standard	Optional
Balustrade	Interior Panel	Clear Tempered Glass	Hairline Stainless Steel
	Deck Cover	Hairline Stainless Steel	Sheet Steel Powder Coating
	Skirt guard Panel	Hairline Stainless Steel	Sheet Steel Black Low Friction Coating
	Hand rail Frame	Hairline Stainless Steel	Aluminium Alloy
	Lighting	Not Provided	Fluorescent Light (Aluminium Handrail Frame will be Provided
Step	Handrail	Synthetic Rubber (Black)	Synthetic Rubber (Other Colours)
	Tread & Cleated Riser	Stainless Steel	Dye-cast Aluminium Alloy With black Painted Grooves
	Demarcation Line	3 Side Yellow Synthetic Molded Resin Inserts	3Side Yellow Synthetic Molded Resin inserts
Pallet for Moving Walk	Tread	Stainless Steel	Dye-cast Aluminium Alloy With black Painted Grooves Pallet Depth 133.3mm
	Demarcation Line	2 Side Yellow Synthetic Molded Resin Inserts	2 Side Yellow Painted
Landing	Comb	Synthetic Molded Resin	Aluminium Alloy
	Landing Plate	Stainless Steel Plate with Anti-slip Etching	

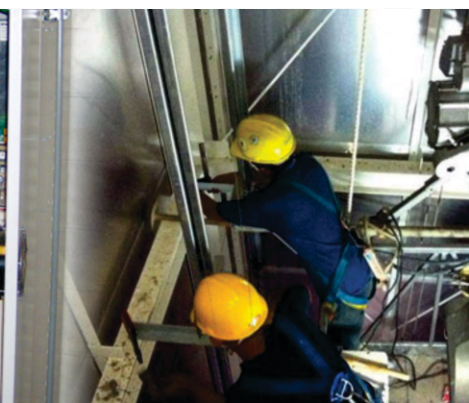
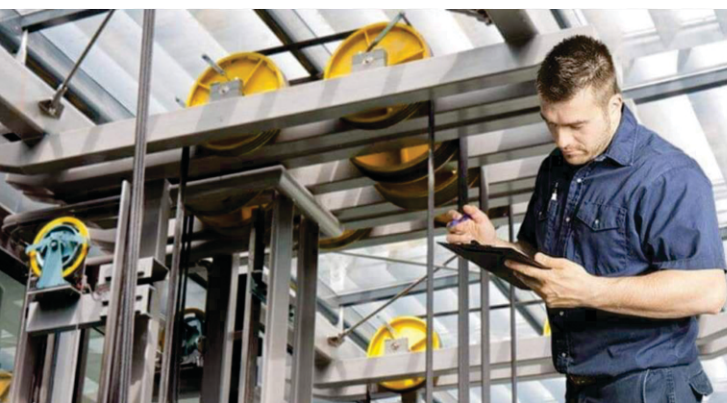


SWITCHGEARS FOR THE SAFETY OF ELEVATORS

Switching, positioning and monitoring:
A wide application range for lift switchgear.



- ▲ Brake monitor release
- ▲ Emergency call system
- ▲ Telephone unit machine room
- ▲ Emergency-Stop button
- ▲ Speed limiter monitoring
- ▲ Position system
- ▲ Top end stop
- ▲ Forked light barrier
- ▲ Emergency escape monitoring
- ▲ Call station elevator car roof
- ▲ Inspection controller
- ▲ Position switch for door drives
- ▲ Lock monitoring
- ▲ Emergency call system
- ▲ Magnetic reed switches
- ▲ Safety catch monitoring
- ▲ Slack wire monitoring cable
- ▲ Door locking device
- ▲ Lock monitoring
- ▲ Floor display
- ▲ Bottom end stop
- ▲ Telephone unit shaft pit
- ▲ Pit control element
- ▲ Position monitor pit ladder
- ▲ Counterweight buffer monitoring
- ▲ Car buffer monitoring
- ▲ Slack rope monitoring



MACHINE ROOM LESS

Technical Specifications

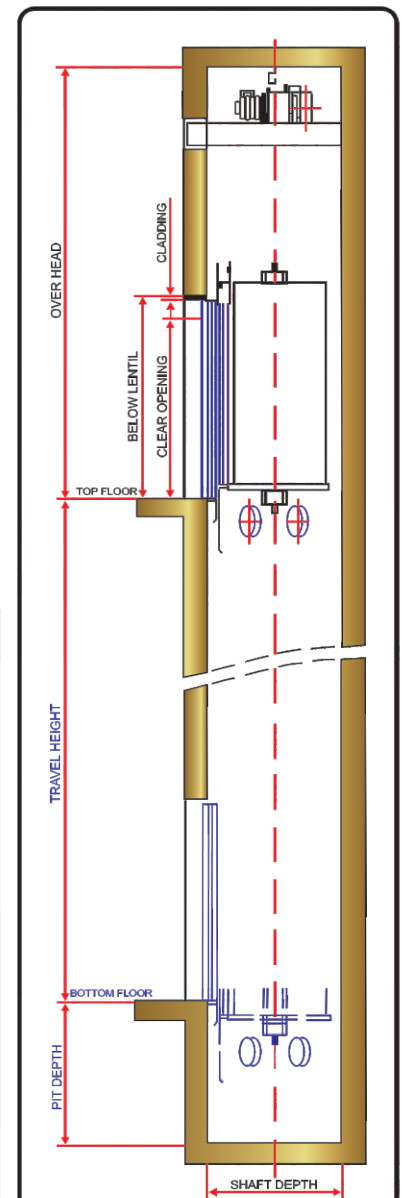
Normal Width (mm)	800	1000	1200
Actual Step Width (mm)	600	800	1000
Capacity (Persons/hr)	4500	6700	9000
No. of Flat Steps	Standard 2, optional 3*	Standard 2, optional 3*	Standard 2, optional 3*
Angle of Inclination (Deg.)	30 or 35	30 or 35	30 or 35
Speed (M/s)	0.5	0.5	0.5

*For rise above 6M, 3 flat steps will be standard

Exterior Specifications

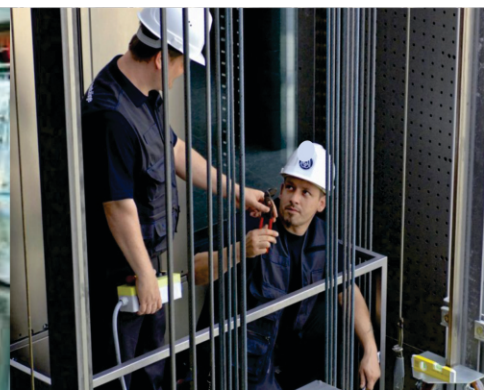
	Description	Standard	Optional
Balustrade	Interior Panel	Clear Tempered Glass	Hairline Stainless Steel
	Deck Cover	Hairline Stainless Steel	Sheet Steel Powder Coating
	Skirt guard Panel	Hairline Stainless Steel	Sheet Steel Black Low Friction Coating
	Hand rail Frame	Hairline Stainless Steel	Aluminium Alloy
	Lighting	Not Provided	Fluorescent Light (Aluminium Handrail Frame will be Provided
Step	Handrail	Synthetic Rubber (Black)	Synthetic Rubber (Other Colours)
	Tread & Cleated Riser	Stainless Steel	Dye-cast Aluminium Alloy With black Painted Grooves
	Demarcation Line	3 Side Yellow Synthetic Molded Resin Inserts	3 Side Yellow Synthetic Molded Resin inserts
Pallet for Moving Walk	Tread	Stainless Steel	Dye-cast Aluminium Alloy With black Painted Grooves Pallet Depth 133.3mm
	Demarcation Line	2 Side Yellow Synthetic Molded Resin Inserts	2 Side Yellow Painted
Landing	Comb	Synthetic Molded Resin	Aluminium Alloy
	Landing Plate	Stainless Steel Plate with Anti-slip Etching	

MACHINE ROOM LESS ELEVATION



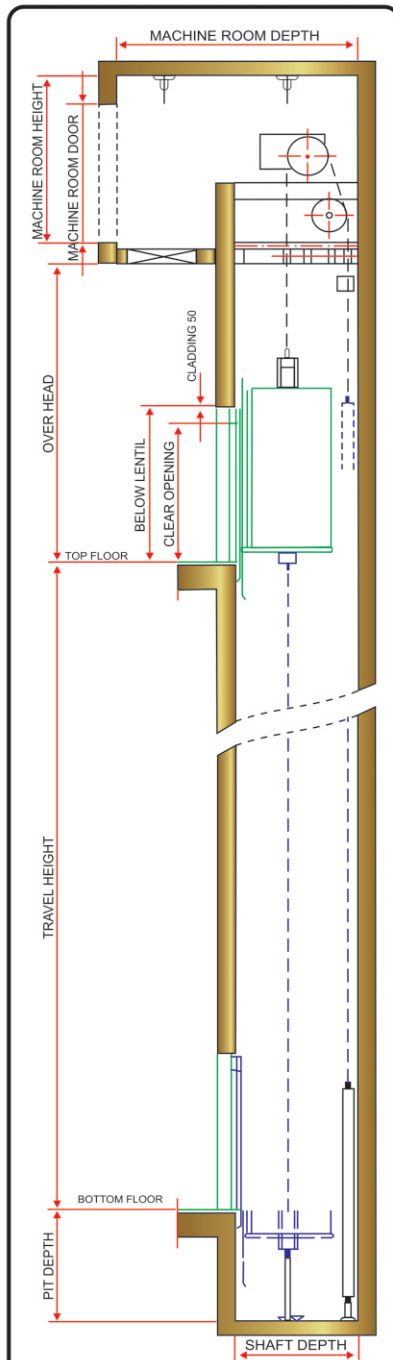
NOTE :

1. All dimension are in millimeters.
2. All dimension are for clear finished lift wells after plastering.
3. All walls minimum 150 RCC or 230 brick (hoist way front wall 230 brick preferred.)
4. RCC machine room structural floor slab 150 thick designed to sustain minimum 1000kg./MUdl.
5. Power supply 415 volts, 3 phase, 4 wires, 50 Hz and 230 volts 1 phase terminating in a MCCb/Eccb switch to be provided by client
6. For Specific requirements our local representative will be happy to work with you in a preparation of working drawings.



ELEVATORS SPECIFICATION

MACHINE ROOM ELEVATION



NOTE :

1. All dimension are in millimeters.
2. All dimension are for clear finished lift wells after plastering.
3. All walls minimum 150 RCC or 230 brick (hoist way front wall 230 brick preferred.)
4. RCC machine room structural floor slab 150 thick designed to sustain minimum 1000kg./MUdl.
5. Power supply 415 volts, 3 phase, 4 wires, 50 Hz and 230 volts 1 phase terminating in a MCCb/Eccb switch to be provided by client
6. For Specific requirements our local representative will be happy to work with you in a preparation of working drawings.

PASSENGER ELEVATORS

Persons	Load Kg	Car inside		Lift Well		Entrance E	Machine Room		Type of Door
		A	B	C	D		K	L	
4	272	1100	700	1600	1200	800	3100	3600	Manual
5	340	1100	900	1600	1400	800	3100	3600	Manual
6	408	1100	1000	1600	1500	800	3100	3900	Manual
8	544	1300	1100	1800	1600	800	3300	4050	Manual
4	272	1100	700	1600	1350	700	3100	3850	Automatic
5	340	1100	900	1600	1500	700	3100	4000	Automatic
6	408	1100	1000	1900	1600	800	3400	4100	Automatic
8	544	1300	1100	1900	1900	800	3400	4400	Automatic
10	680	1350	1300	1900	2100	800	3400	4600	Automatic
13	884	2000	1100	2500	1900	900	4000	4400	Automatic
16	1088	2000	1300	2500	2100	1000	4000	4600	Automatic
20	1360	2000	1550	2500	2400	1000	4000	4900	Automatic
26	1768	2100	1800	2600	2500	1100	4200	5000	Automatic

FREIGHT ELEVATORS

Load in Kgs	Car inside		Lift Well		Entrance E*	Machine Room		M/C Room Height
	A	B	C	D		K	L	
800	1550	1500	2000	2000	900	2500	4500	2300
1000	1400	1800	2300	2100	1400	2500	4600	2300
1500	1700	2000	2600	2300	1700	2600	4800	2300
2000	1700	2500	2600	2800	1700	2600	5300	2300
2500	2000	2500	2800	2750	2000	2800	4700	2300
3000	2000	3000	2900	3300	2000	2900	5800	2300
4000	2500	3000	3400	3300	2500	3400	5800	2300
5000	2500	3600	3400	3900	2500	3400	6400	2300

*Clear Entrance width is based on Vertical Lifting Car Door And Vertical Bi-parting doors. For Collapsible Mid bar doors, the clear entrance width will be reduced by 200mm (Max 1200 mmm)

HOSPITAL ELEVATORS

Persons	Load Kg	Car inside		Lift Well		Entrance E	Machine Room		M/C Room Height
		A	B	C	D		K	L	
15	1020	950	2400	1700	3000	800	3700	5500	2300
20	1360	1300	2400	2200	3000	1200	4200	5500	2300
26	1768	1600	2400	2350	3000	1200	4350	5500	2300

SERVICE ELEVATORS / DUMB WAITER

Load in Kgs	Car Speed M.P.S.	Car inside		Lift Well		Entrance E*	Machine Room		M/C Room Height
		A	B	C	D		K	L	
100	0.50	700	700	1200	900	700	1200	1150	2300
150	0.50	800	800	1300	1000	800	1300	1150	2300
200	0.50	900	900	1400	1100	900	1400	1150	2300
250	0.70	1000	1000	1500	1200	1000	1500	1200	2300

Speed (MPS)	Pit Depth	Overhead
Upto 1.50	1600	4800
Over 1.50 Upto 2.5	2600	5700
Over 2.5	2600	6700

**All hoistway walls should be minimum 230 Brick or 150 RCC.
** All dimensions are in mm





DIGITECH ELEVATORS PVT. LTD.

AN ISO 9001:2015 CERTIFIED COMPANY

#23, 1st Floor, Opp. IOB Bank, Kanakanagar Main Road, R.T. Nagar (P), Bangalore - 560032.

Tel : +91-80-23652610 | +91-80-2365 6210 | Cell : 9448056354 | 9845926155 | 9845071406.

E-mail : digitech.elevators@gmail.com | Web : www.digitechelevators.com